



Biomedical Informatics

Big Data Science

VISION, PROMISES & CHALLENGES

December 13-14, 2017

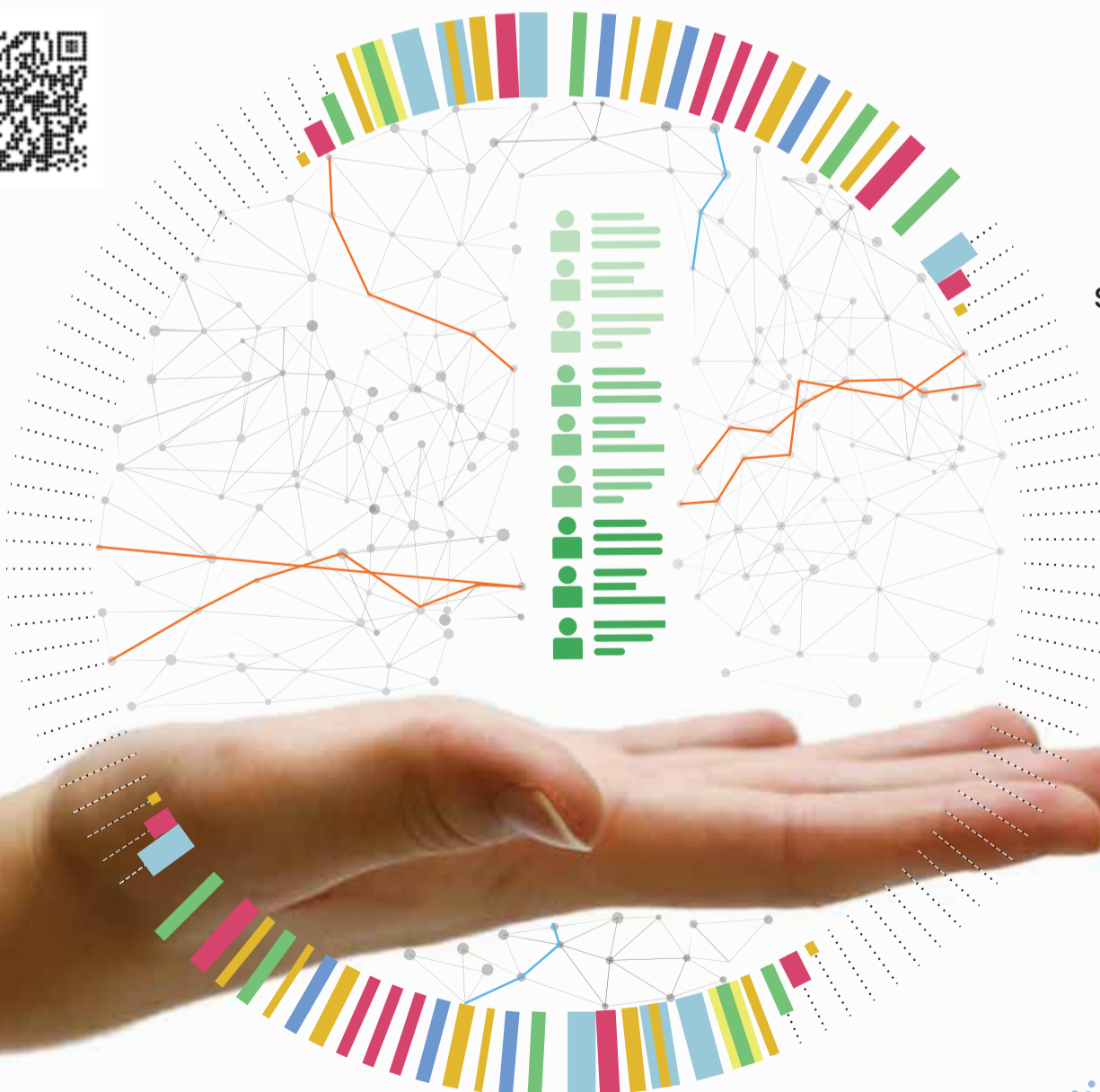
Lorry I. Lokey Interdisciplinary Center
for Life Sciences and Engineering,
Technion

ABSTRACT DEADLINE: SEPTEMBER 30

/* Biomedical Informatics is becoming a central focus across academic research centers, medical institutions and data-science industry and entrepreneurs. The application of machine learning approaches to large volumes of medical data, information, and knowledge is driving discovery at the interface of basic research and biomedicine. These approaches allow testing basic science hypotheses in patients and can even generate new hypotheses that traverse from basic research to human health.

The aim of the conference is to bring together key innovators from academia, industry and clinics to showcase current approaches and breakthroughs, and brainstorm future research directions and discovery paradigms. We expect the meeting will thereby foster new initiatives and partnerships.*/*

biomedical-informatics.net.technion.ac.il



SPEAKERS:

Allon Klein, *Harvard Medical School*
Amos Tanay, *Weizmann Institute*
Elad Yom-Tov, *Microsoft*
Eran Segal, *Weizmann Institute*
Eric Kirkendall, *Cincinnati Children's Hospital Medical Center*
Hanna Bayer, *NYU*
Isaac Kohane, *Harvard*
Jaroslaw Meller, *Cincinnati Children's Hospital Medical Center*
Joel Dudley, *Mt. Sinai*
John Wilbanks, *Sage Bionetworks*
Jonathan Adiri, *Healthy.io*
Jonathan Laserson, *Zebra Medical Vision*
Kira Radinsky, *Technion*
Michal Rosen-Zvi, *IBM*
Nigam Shah, *Stanford*
Ran Balicer, *Clalit HMO*
Roy Kishony, *Technion*
Shai Shen-Orr, *Technion*
Soren Brunak, *Dk-University of Copenhagen*
Uri Alon, *Weizmann Institute*
Varda Shalev, *Maccabi HMO*
Ze'ev Ronai, *Technion*

The symposium will be held at:

Faculty of Biotechnology and
Food Engineering Auditorium
Technion

ORGANIZERS:

Roy Kishony, *Technion*
Kira Radinsky, *Technion*
Nir Friedman, *Hebrew University*
Eran Segal, *Weizmann Institute*
Shai Shen-Orr, *Technion*